

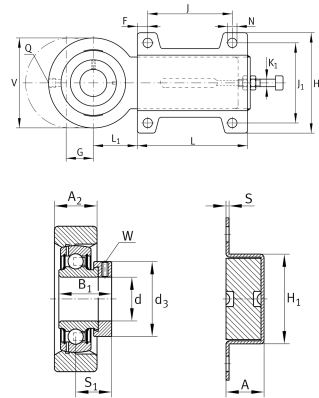
## PHUSE50-XL-N [↗](#)

### Take-up housing unit

Take-up housing units PHUSE, cast iron and sheet steel housing, radial insert ball bearing with eccentric locking collar, P seals

X-life

## Technical information



### Your current product variant

Groove	N	Cast iron housing with undercut slot for end caps
Material	GG	Grey cast iron

### Main Dimensions & Performance Data

d	50 mm	Bore diameter
H	130 mm	Height flange
A	36 mm	Height housing
V	120 mm	Shoulder diameter housing
L	256 mm	Length total
C 0r G	23,200 N	Load carrying capacity (housing)
≈m	5.299 kg	Weight

### Mounting dimensions

N	14 mm	Fixing bore
J	180 mm	Distance fixing bore
J 1	100 mm	Bore distance width



Dimensions

L <sub>1</sub>	60 mm	Distance shaft axis
A <sub>2</sub>	30 mm	Width housing
H <sub>1</sub>	60 mm	Heigth guidance
K <sub>1</sub>	M16	Thread adjusting screw
S	4 mm	Thickness of flange
F	20 mm	Distance fixing bore outside
G	80 mm	Axial displacement
Q	M6	Connection thread for lubrication

Additional information

HUE10	Housing
HUSE10	Housing (Part 2)
GRAE50-XL-NPP-B	Bearing designation
KASK10	Protecting cap

Temperature range

T <sub>min</sub>	-20 °C	Operating temperature min.
T <sub>max</sub>	120 °C	Operating temperature max.