

Image may differ from product. See technical specification for details.

## P2BC 25M-TPSS

**Pillow block ball bearing unit with extended inner ring and set screw locking, composite**

Pillow (plummer) block ball bearing units consist of an insert bearing mounted in a composite housing that is lightweight but robust and has excellent corrosion resistance. This variant is suitable for applications with both constant and alternating directions of rotation. It has an inner ring extended on both sides and is locked onto the shaft by tightening a set screw on the inner ring, making it easy to mount.

- Designed for a constant and alternating rotation
- Excellent corrosion resistance
- Lightweight
- Recyclable

# Oversigt

## Dimensions

Shaft diameter	25 mm
Centre height (pillow block)	36.5 mm
Housing overall width	36 mm
Centre distance between bolt holes	105 mm
Bearing width, total	34.1 mm
Attachment bolt diameter	10 mm

## Performance

Basic dynamic load rating	11.9 kN
Basic static load rating	7.8 kN
Limiting speed	4 300 r/min
Note	Limiting speed with shaft tolerance h6

## Properties

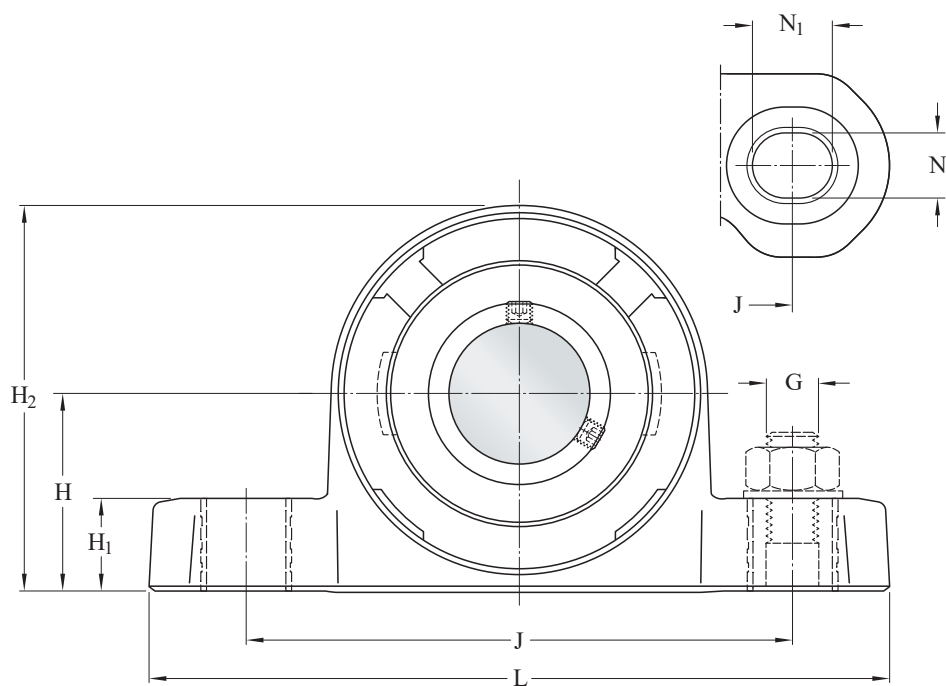
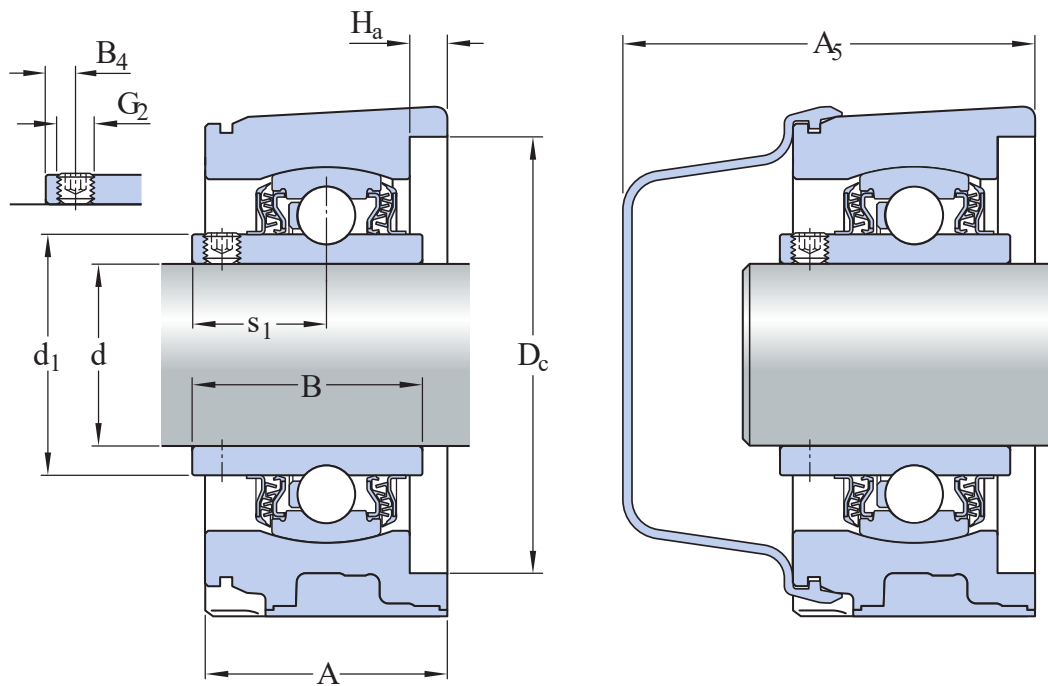
Housing type	Pillow block, normal base
Number of bolt holes for fasteners	2
Fastening bolt hole type	Plain
Retaining feature, inner ring	Set screws
Bore type	Cylindrical
Rubber seating ring	Without
Material, housing	Composite for the SKF Food Line
Material, bearing	Stainless steel
Coating	Without
Sealing, bearing	Seal and flinger on both sides
Sealing type	Contact, gutter
Sealing, unit	Optional end cover
Lubricant	Grease
Relubrication hole	Without
Grease fitting	Without

## Logistics

Product net weight	0.308 kg
eClass code	23-05-08-02
UNSPSC code	31171536

## Teknisk specifikation

Compliance with standard	Not standardized
Purpose specific	For food and beverage applications
Material, housing	Composite for the SKF Food Line
Sealing, bearing	Seal and flinger on both sides
Sealing type, bearing	Contact, gutter
Sealing, unit	Optional end cover
Coating	Without



## Dimensions

d	25 mm	Bore diameter
d <sub>1</sub>	≈ 33.74 mm	Shoulder diameter of inner ring
D <sub>c</sub>	62 mm	Centring diameter
H <sub>a</sub>	6 mm	Groove height for backseal
A	36 mm	Base width
A <sub>1</sub>	36 mm	Top width
A <sub>5</sub>	62.6 mm	Width including end cover
B	34.1 mm	Width of inner ring
B <sub>4</sub>	5 mm	Distance from locking device side face to thread centre
H	36.5 mm	Height of spherical seat centre
H <sub>1</sub>	17 mm	Foot height
H <sub>2</sub>	72.5 mm	Overall height
J	105 mm	Distance between attachment bolts
J	max. 108 mm	Maximum distance between attachment bolts
J	min. 102 mm	Minimum distance between attachment bolts
L	142 mm	Overall length
N	11.5 mm	Diameter of attachment bolt hole
N <sub>1</sub>	14.3 mm	Length of attachment bolt hole
s <sub>1</sub>	19.8 mm	Distance from locking device side face to raceway centre

## Calculation data

Basic dynamic load rating	C	11.9 kN
Basic static load rating	C <sub>0</sub>	7.8 kN
Fatigue load limit	P <sub>u</sub>	0.335 kN
Limiting speed		4 300 r/min
		Limiting speed with shaft tolerance h6

## Mounting information

Set screw	G <sub>2</sub>	M6x0.75
Hexagonal key size for set screw		3 mm
Recommended tightening torque for set screw		4 N·m
Recommended diameter for attachment bolts, mm	G	10 mm
Recommended diameter for attachment bolts, inch	G	0.375 in

## Tolerancer og frigange

---

The values depend on the included bearing:

- Bore diameter tolerance → [table 1](#)
- Radial internal clearance → [table 2](#)
- Recommended fit → [table 3](#)
- Shaft tolerance → [table 4](#)

## Kompatible produkter

### Component

---

Insert bearing with set screw locking and extended inner ring

[YAR 205-2LPW/SS](#)

### Recommended product

---

End cover for bearing units

[ECB 505](#)

## Vilkår for anvendelse