



Image may differ from product. See technical specification for details.

NJ 2315 ECP

Single row cylindrical roller bearing, NJ design

Single row cylindrical roller bearings are designed to accommodate high radial loads in combination with high speeds. Having two integral flanges on the outer ring and one on the inner ring, NJ design bearings can accommodate axial displacement in one direction. An important feature is the separable design, which facilitates mounting and enables the bearing components to be interchanged.

- High radial load carrying capacity
- Low friction
- Long service life
- Locate the shaft axially in one direction

- Separable design

Oversigt

Dimensions

Bore diameter	75 mm
Outside diameter	160 mm
Width	55 mm

Performance

Basic dynamic load rating	380 kN
Basic static load rating	400 kN
Reference speed	4 500 r/min
Limiting speed	5 300 r/min
SKF performance class	SKF Explorer

Properties

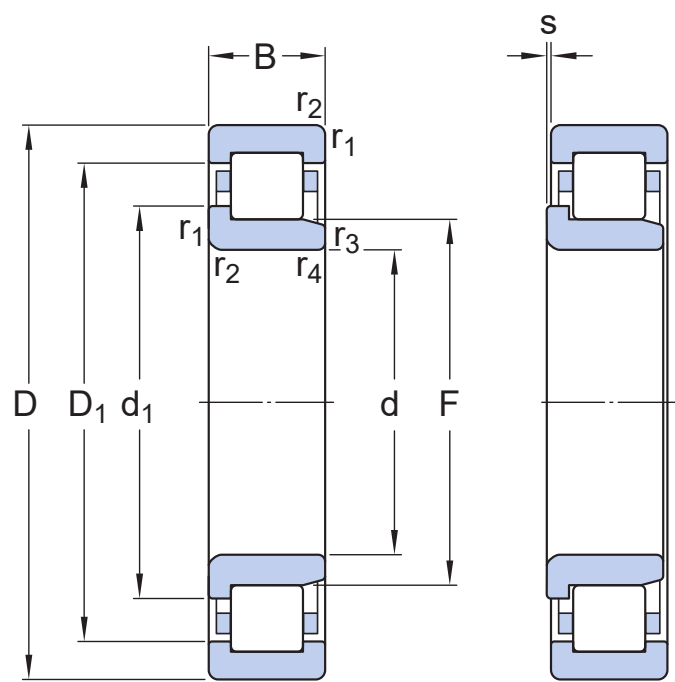
Bearing part	Complete bearing
Axial displacement capability	In one direction
Number of rows	1
Locating feature, bearing outer ring	Without
Bore type	Cylindrical
Cage	Non-metallic
Number of flanges, outer ring	2
Number of flanges, inner ring	1
Loose flange	None
Radial internal clearance	CN
Tolerance class	Normal
Coating	Without

Sealing	Without
Lubricant	None
Relubrication feature	Without
Indicative carbon footprint for new product	18.1 kg CO ₂ e

Logistics

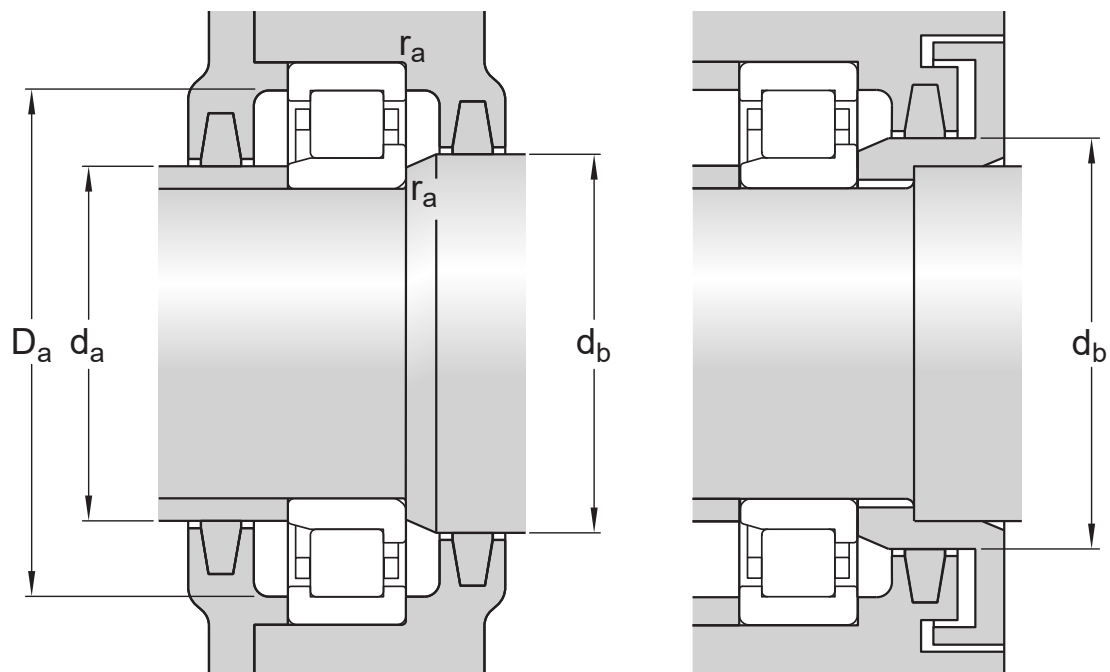
Product net weight	5.02 kg
eClass code	23-05-09-01
UNSPSC code	31171505

Teknisk specifikation



Dimensions

d	75 mm	Bore diameter
D	160 mm	Outside diameter
B	55 mm	Width
d ₁	≈ 104 mm	Shoulder diameter of inner ring
D ₁	≈ 134.95 mm	Shoulder diameter of outer ring
F	95 mm	Raceway diameter of inner ring
r _{1,2}	min. 2.1 mm	Chamfer dimension
r _{3,4}	min. 2.1 mm	Chamfer dimension
s	max. 4.8 mm	Permissible axial displacement



Abutment dimensions

d_a	min. 87 mm	Diameter of spacer sleeve
d_a	max. 92 mm	Diameter of spacer sleeve
d_b	min. 107 mm	Diameter of shaft abutment
D_a	max. 148 mm	Diameter of housing abutment
r_a	max. 2 mm	Radius of fillet

Calculation data

SKF performance class		SKF Explorer
Basic dynamic load rating	C	380 kN
Basic static load rating	C ₀	400 kN
Fatigue load limit	P _u	50 kN
Reference speed		4 500 r/min
Limiting speed		5 300 r/min

Minimum load factor	k_r	0.25
Limiting value	e	0.3
Calculation factor	Y	0.4

Associated products

Angle ring	HJ 2315 EC
------------	------------

Tolerancer og frigange

GENERAL BEARING SPECIFICATIONS

- Tolerances: Normal (metric), P6, Normal (inch)
- Radial internal clearance: cylindrical bore, tapered bore
- Axial internal clearance: NUP, NJ + HJ

BEARING INTERFACES

- [Seat tolerances for standard conditions](#)
- [Tolerances and resultant fit](#)

Kompatible produkter

Recommended product

Angle ring (L-shaped thrust collar) for single row cylindrical roller bearings, NU or NJ design

[HJ 2315 EC](#)

Vilkår for anvendelse